

KEEP CALM

It's only

SATs



When are the SATs?

- SATs are the Standardised Assessment Tests that are given to children at the end of Key Stage 2.
- The SATs take place over four days, starting on Monday 11th May ending on Thursday 14th May.
- The SATs papers consist of:
 - Spelling, punctuation and grammar (paper 1: Grammar/ Punctuation/ Spelling) – Monday 11th May
 - Spelling, punctuation and grammar (paper 2: Spelling test) – Monday 11th May
 - Reading – Tuesday 12th May
 - Maths (paper 1: Arithmetic) – Wednesday 13th May
 - Maths (paper 2: Reasoning) – Wednesday 13th May
 - Maths (paper 3: Reasoning) – Thursday 14th May

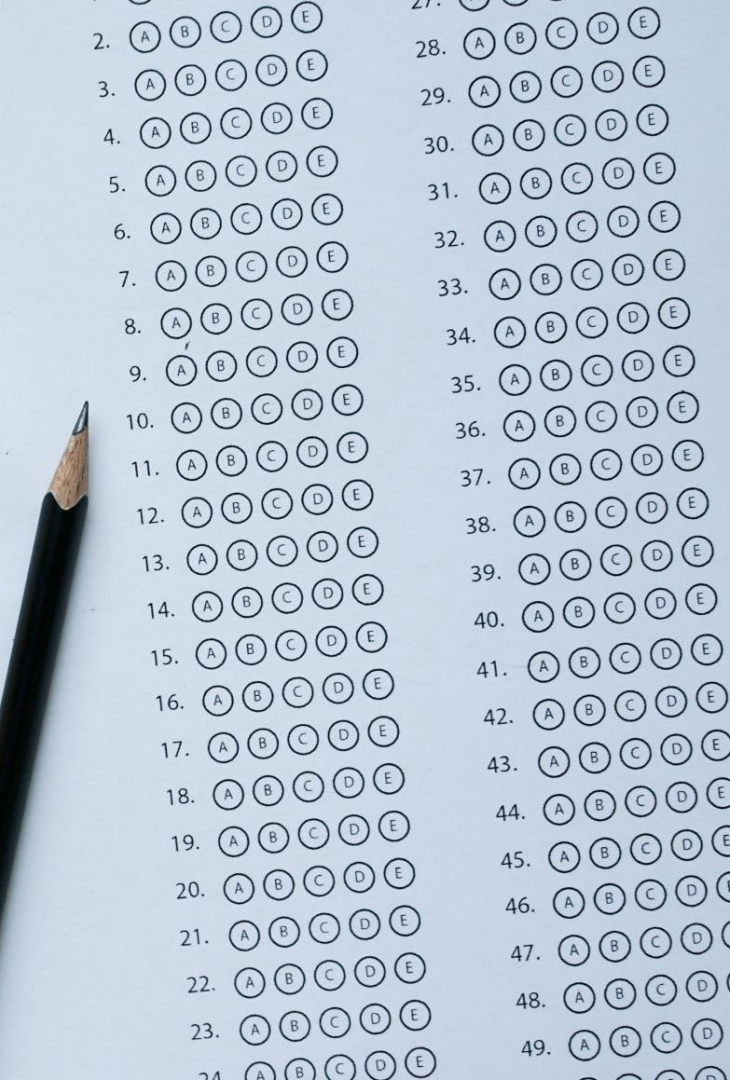
Structure of the SATs.

- The tests take place during normal school hours, under exam conditions.
- Children are not allowed to talk to each other from the moment the assessments are handed out until they are collected at the end of the test.
- After the tests are completed, the papers are sent away to be marked externally.
- The results are then sent to the school in July.
- Each test lasts no longer than 60 minutes:
 - Spelling, punctuation and grammar (paper 1: Grammar/Punctuation) – 45 minutes
 - Spelling, punctuation and grammar (paper 2: Spelling) – 15 minutes
 - Reading – 60 minutes
 - Maths (paper 1: Arithmetic) – 30 minutes
 - Maths (paper 2: Reasoning) – 40 minutes
 - Maths (paper 3: Reasoning) – 40 minutes

The results

- Tests are marked externally. Once marked, the tests will be given the following scores:
 - A raw score (total number of marks achieved for each paper);
 - A scaled score (see below);
 - A judgement on if the National Standard has been met.
 - After marking each test, the external marker will convert the raw score to a scaled score. Even though the tests are made to the same standard each year, the questions must be different. This means the difficulty of the tests may vary. Scaled scores ensures an accurate comparison of performance over time.
 - Results expected Tuesday 7th July 2026
- Scaled scores range from 80 to 120.
- A scaled score of 100 or more shows the pupil is meeting the National Standard.
- A scaled score of 110 or more shows the pupil is meeting the Above National Standard grade. (Greater Depth)

		2017		2018		2019		2022		2023		2024		2025		Change from 2024 to 2025
		Raw scores	%	RS	%	RS	%	RS	%	RS	%	RS	%	RS	%	Raw score
Maths	EXS	57	52	61	55	58	53	58	53	56	51	54	49	58	53	+4
	/110	GDS	95	86	96	87	95	86	96	87	94	85	93	85	95	86
Reading	EXS	26	52	28	56	28	56	29	58	24	48	27	54	28	56	+1
	/50	GDS	39	78	40	80	41	82	41	82	38	76	40	80	40	80
GPS	EXS	36	51	38	54	36	51	35	50	36	51	35	50	35	50	0
	/70	GDS	56	80	56	80	55	79	55	79	55	79	53	76	54	77



Spelling, Punctuation and Grammar: Monday 11th May

- Spelling, Punctuation and Grammar consists of two papers.
 - Paper 1 focuses on all three elements (spelling, punctuation and grammar). The paper lasts for 45 minutes.
 - Paper 2 consists of a spelling test only. It should take approximately 15 minutes, although this is not a set amount of time.

KS2 Grammar SATs papers analysis by @_MissieBee

% of questions by content domain

Content domain	2017	2018	2019	2022	2023	2024	2025
G1	26	24	26	24	24	24	26
G2	8	6	4	4	8	6	6
G3	8	10	8	12	8	8	10
G4	10	14	12	16	12	12	14
G5	34	30	32	30	32	32	30
G6	10	10	12	10	10	12	8
G7	4	6	6	4	6	6	6

Content domain reference

G1 grammatical terms or word classes

G2 functions of sentences

G3 combining words, phrases and clauses

G4 verb forms, tenses and consistency

G5 punctuation

G6 vocabulary

G7 standard English and formality

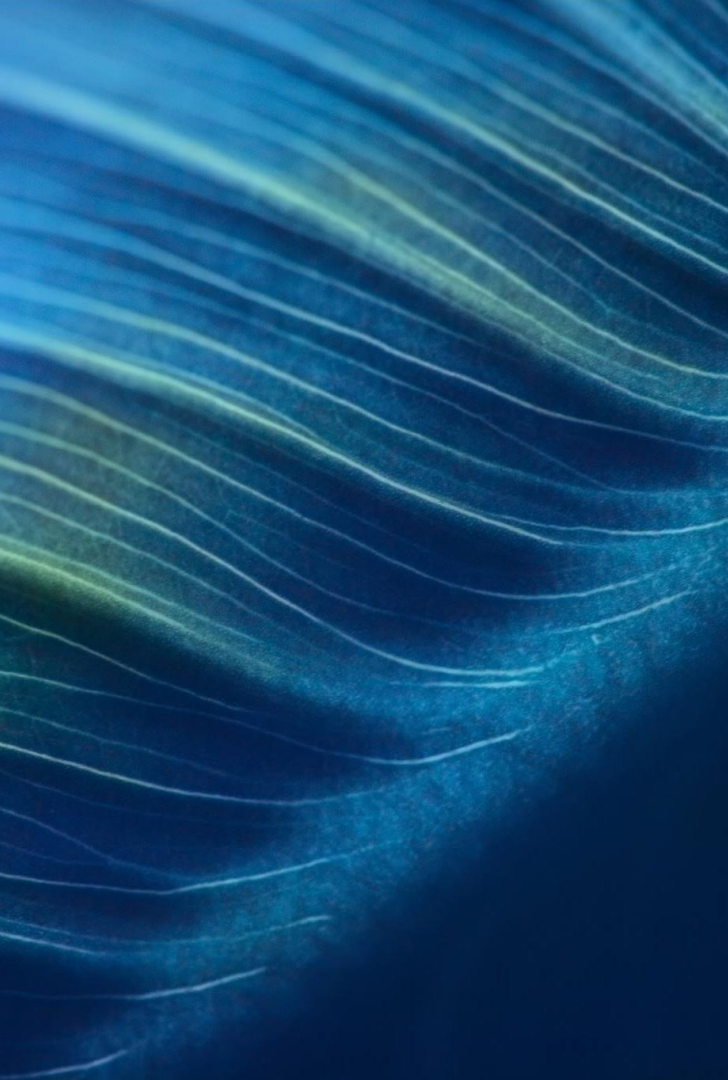
% of questions by content domain

Content domain	'17	'18	'19	'22	'23	'24	'25
2a give/explain the meaning of words in context	20	20	12	10	18	10	12
2b retrieve and record information/identify key details from fiction and non-fiction	28	26	42	38	32	38	30
2c summarise main ideas from more than one paragraph	4	6	2	4	2	2	6
2d make inferences from the text/explain and justify inferences with evidence from the text	44	44	36	44	46	44	48
2e predict what might happen from details stated and implied	0	0	0	2	0	0	0
2f identify/explain how information/narrative content is related and contributes to meaning as a whole	2	0	0	2	2	0	0
2g identify/explain how meaning is enhanced through choice words and phrases	2	0	6	0	0	0	2
2h make comparisons within the text	0	4	2	0	0	6	2

KS2 Reading SATs papers analysis by @_MissieBee

	2017		2018		2019		2022		2023		2024		2025	
Exact	Words	Marks	W	M	W	M	W	M	W	M	W	M	W	M
First	602	15	560	17	633	14	474	16	627	14	578	16	575	14
Second	709	17	214	17	632	19	538	15	808	20	648	18	550	18
Third	626	18	714	16	903	17	541	19	611	16	786	16	736	18
~Total	1,900	50	1,500	50	2,200	50	1,600	50	2,000	50	2,000	50	1,900	50
3m Qs	2 (third ex.)		2 (third ex.)		2 (third ex.)		2 (third ex.)		2 (2nd & 3rd ex.)		(2nd & 3rd ex.)		(2nd & 3rd ex.)	

	2017		2018		2019		2022		2023		2024		2025	
	Extract	Questions	Ex.	Qu.	Ex.	Qu.	Ex.	Qu.	Ex.	Qu.	Ex.	Qu.	Ex.	Qu.
Words	1937	1203	1488	1077	2168	1020	1553	975	2046	1174	2012	1061	1861	1052
Total	~3100		~2600		~3200		~2500		~3200		~3100		~2900	
EXS	52%		56%		56%		58%		48%		54%		56%	



Maths: Wednesday 13th May and Thursday 14th May

The maths assessments consist of three tests.

Paper 1: Arithmetic (30 minutes) – Wednesday 13th May

Paper 2: Reasoning (40 minutes) – Wednesday 13th May

Paper 3: Reasoning (40 minutes) – Thursday 14th May



Maths Papers 2 and 3 (Reasoning)

- Paper 2 will take place on Wednesday 13th May and paper 3 will take place on Thursday 14th May. These tests have a total of 35 marks each.
- These papers require children to demonstrate their mathematical knowledge and skills, as well as their ability to solve problems and their mathematical reasoning. They cover a wide range of mathematical topics from key stage 2 including,
 - Number and place value (including Roman numerals);
 - The four operations;
 - Geometry (properties of shape, position and direction);
 - Statistics;
 - Measurement (length, perimeter, mass, volume, time, money);
 - Algebra;
 - Ratio and proportion;
 - Fractions, decimals and percentages.

KS2 Maths SATs papers analysis by @Missie_Bee

	2017	2018	2019	2022	2023	2024	2025
% required to 'pass'	52	55	53	53	51	49	53
% of questions from years 3-5 curricula	58	53	52	63	58	56	62
% of questions from weightiest content domains (calculations & FDP)	36	43	54	63	58	67	59

KS2 Maths SATs papers analysis by @_MissieBee

% of questions from each year group curriculum

Year	2017	2018	2019	2022	2023	2024	2025
3	7	9	10	8	10	12	12
4	26	18	21	23	19	26	21
5	25	26	21	32	29	18	29
6	41	47	47	37	41	44	38

Content domain	2017	2018	2019	2022	2023	2024	2025
Number & PV	9	10	9	9	10	9	13
Calculations	22	29	30	38	33	41	35
FDP	14	14	24	25	25	26	24
Ratio & prop.	9	6	8	6	6	5	6
Algebra	9	9	6	3	7	3	2
Measurement	14	13	9	7	7	7	11
Shapes	9	10	7	6	6	6	4
Pos. & direction	3	4	3	2	2	2	3
Statistics	11	6	4	3	4	2	2

Supporting your child in preparing for the SATs

- Tips:

- Look back through their past papers that were sent home by the school to go over and prepare the children.
- Use a timetable from now until SATs on things they should be doing every night. Little and often. Spellings. TTRs. Reading. Use of Sats Bootcamp and the revision guides (Pearsons Books)
- Give your child time to go outside and reduce screen time.
- Ensure your child is eating and drinking well and getting a good amount of sleep.
- Make sure your child is in school for 8:00am everyday in sats week.



Supporting your child in preparing for the SATs

Tips:

- Ensure your child has the best possible attendance at school.
- DO Not take term time holidays as they will miss vital learning.
- Support your child with any homework tasks. Make good use of the revision guides!
- Reading, spelling and arithmetic (e.g. times tables) are always good to practice.
- Talk to your child about what they have learnt at school and what book(s) they are reading (the character, the plot, their opinion).
- Make sure your child has a good sleep and healthy breakfast every morning!



Access Arrangements:

- Without going into detail of who they are, some children will have access to adult support. This comes in the form of a reader and your child will already know if they have extra support.
- Make sure you speak to your children about putting their hand up to have questions read if they are unsure and to use their time wisely.
- Many adults are needed, and children have been split for the test, so they must be on time and ready to go.
- Some will be with Mrs. Woods in the hall whilst others test but this is so we can support all the children who need it.

SEND - ASD	Will qualify for 25% automatically due to EHCP.	<ul style="list-style-type: none"> • 25% extra for reading paper. • Reading age 8.11 therefore reader and no extra time for GPS. • Maths – reader. • Check for transcription. • Allocate same adult all week. • Target for ARE • EAL
SLCN	25% extra time and a reader for GPS and maths. No reader for English paper but can have 25% extra time.	<ul style="list-style-type: none"> • Rest breaks between each reading text. • Needs to speak aloud so will need to take test in room with 2 adults. • Allocate same adults all week – target child for ARE • EAL
MLD SEMH	25% extra time for all tests.	<ul style="list-style-type: none"> • Rest breaks between each reading text. • Target child for ARE
SLCN SEMH	25% extra time and a reader for GPS and maths. No reader for English paper but can have 25% extra time.	<ul style="list-style-type: none"> • Rest breaks between each reading text. • Not target child for ARE • EAL

What if my child is ill?

We need them in school. If they miss a test, there is nothing we can do.

Bring them in and as soon as they have finished, we will send them home if we feel they are too poorly to stay.

Make sure that they eat a healthy and home cooked meal from Sunday so as to reduce the risk of food poisoning during the week. Lots of natural vitamins and healthy food choices will support them.

Earlier nights are important as they allow the children to focus during the test and we need them to be ready to start.

When should my child be in?

We are starting the first test at 9:00 prompt. Children will need to be read the instructions, will need to fill out the front of the form and be reminded of the rules.

We will also do a warm up and reminder before the test starts. Therefore children will be in class from 08:30 and no later.

Breakfast club is open and free to all students and we strongly recommend you drop them off at 8:00am every morning.

Other points to remember

- Writing is assessed using evidence collected throughout Year 6. There are no Year 6 SATs writing tests. Writing continues to be taught right up until the end of June after SATs so don't take your child out of school.
- Writing assessments will be formed from judgements made by the teacher, looking at evidence from writing collected over the course of the year.
- The teacher will moderate their assessments with other professionals to make sure there is a consistent standard across the country.
- Final judgements will be reported to parents at the same time as the other assessment results.



ANY

QUESTIONS?